



# Falcon

01752 600444

## 210 Southway Drive

Southway, Plymouth, PL6 6QQ

Offers in Excess of £200,000







## In Brief

### Terraced House

**Reception Rooms** Living - Dining room

**Bedrooms** 3 Bedrooms

**Heating** Gas central Heating

**Area** 863SqFt

**Tenure** Freehold

**Parking** On Street Parking

**Council Tax** B

## Description

Located in the ever-popular Southway Drive to the north of the city, this three-bedroom mid-terrace ex-local authority home offers spacious and modern living with excellent access to both Dartmoor and Derriford Hospital.

The ground floor features a stylish open-plan living and dining area, perfect for entertaining or family time, alongside a recently fitted modern kitchen which opens out onto a beautifully maintained southerly facing garden ideal for enjoying the sun throughout the day.

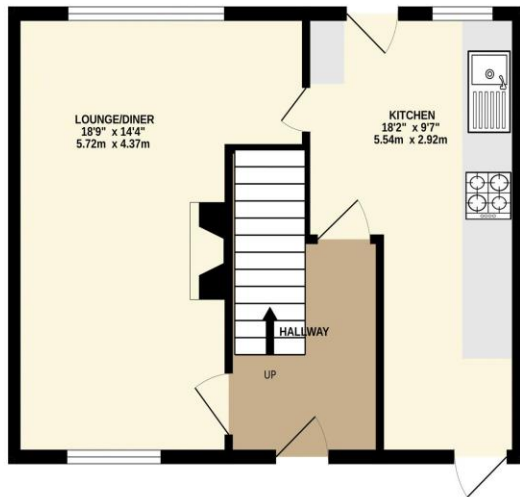
Upstairs, the property offers two generous double bedrooms, a well-proportioned single bedroom, and a contemporary family bathroom. Perfectly suited for first-time buyers, families, or investors alike, this home combines comfort, convenience, and location.

**Need A Mortgage?**

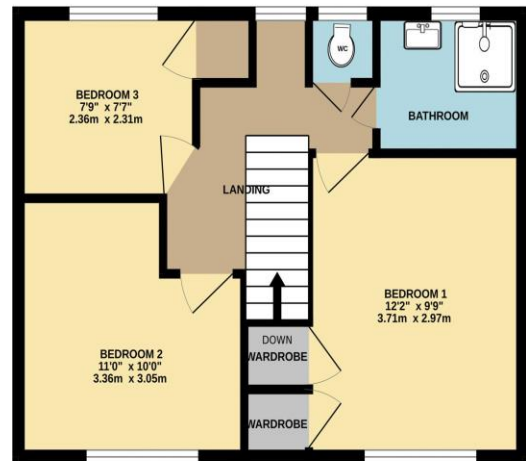
**Don't pay more than you need to for your mortgage advice:  
ours is only £195 paid when you move!**

## Floor Plans

GROUND FLOOR



1ST FLOOR



Made with Metropix ©2025



## Fixed Price Conveyancing

A complete solution from just £600 with No sale – No Fee





We have not tested any apparatus, equipment, fixtures and fittings or services and so cannot verify that they are connected, in working order or fit for the purpose. Neither have we had sight of the legal documents to verify the Freehold or Leasehold status of any property; or sight of any consents, including Planning Permissions, building Regulations and Breaches of Covenants that may be required for alterations to the property. A buyer is advised to obtain verification from their Solicitor and/or Surveyor. Items shown in photographs are NOT included unless specifically mentioned within the Sales Particulars. Any floor plans on these details are not drawn to scale and are intended for guidance only

Falcon Property is an Introducer to Bradleys Financial Management Ltd. They are appointed representatives of Sesame Ltd who are authorised and regulated by the Financial Services Authority. Bradleys do not charge for mortgage advice, however a fee paying option is available. Typical fee is £195. Bradleys Financial Management: 16 Mannamead Road, Mutley, Plymouth, PL4 7AA

**Your home may be repossessed if you do not keep up repayments on your mortgage.**

